

# Technical Specifications

Physical Address: 1913 Hickory Blvd. SE

Mailing Address: PO Box 600

Lenoir, NC 28645

---



## Facility Information

The J.E. Broyhill Civic Center was opened by the Caldwell Community College & Technical Institute in October of 1993. This 1,000 seat auditorium houses a proscenium stage with excellent acoustics.

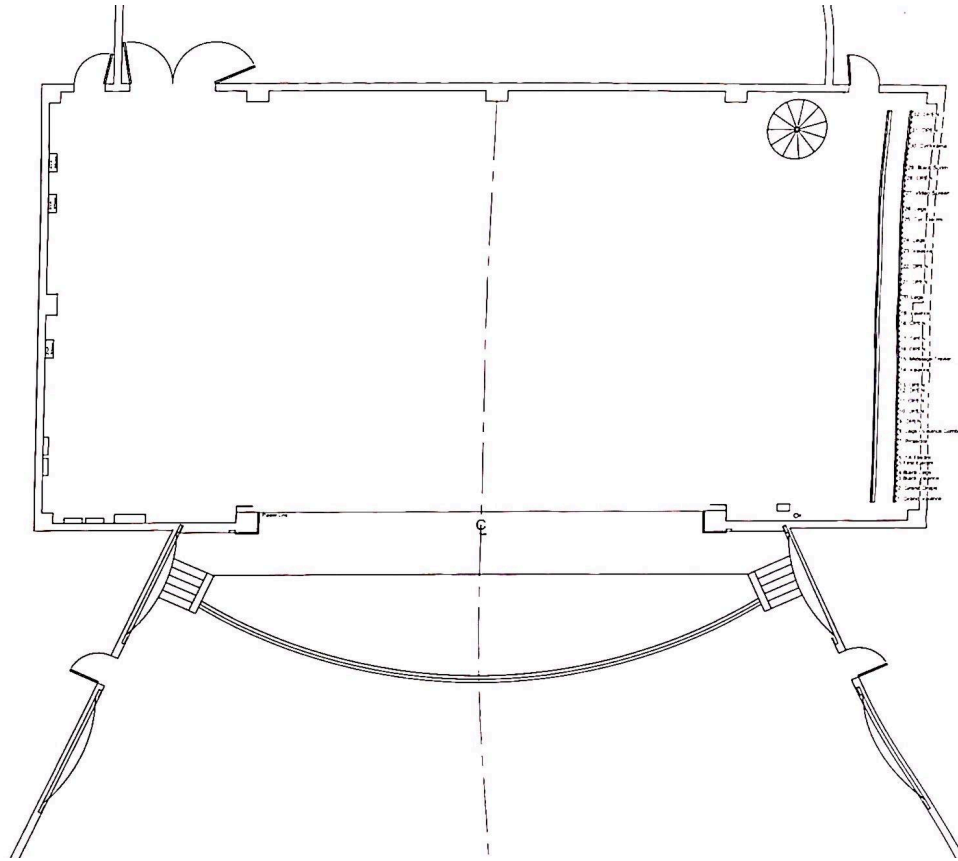
---

---

# TABLE OF CONTENTS

Facility Information	1
TABLE OF CONTENTS	2
Stage Dimensions	2
House Seating Chart	5
Lineset Schedule	6
Lighting	8
Sound	8
House PA is a flown L / R line array composed of 16 Fulcrum Acoustics FL283 cabinets (8 per side) and 4 RCF 8006AS active subwoofers (two per side). The array is dead hung.	9
Consoles:	9
Wireless:	9
Power	9
Amenities	9
Loading/ Parking Information	10
Trusted Vendors and Partners	11
<b>Staff Contact</b>	<b>11</b>

## Stage Dimensions



**Proscenium Arch-** Width 42', Height 22'

**Stage Depth-** from Plaster Line 40'. From apron 46'

**Curtain to back wall-** 39'

**SL Proscenium Opening to Fly Rail-** 15'.6"

**SR Proscenium Opening to Fly Rail-** 19'.8"

**Orchestra Pit Depth-** (from audience chamber) 6'9" (from lip of stage) 8'

**Wing Space-** Stage Right: 25', Stage Left 15'

**Grid Height-** 59'6"

**Max Trim Height-** (from stage floor) 1st Electric 52' (to accommodate floating arbor) all others 55'6"

---

**Dock Door Height-** 10'.5" **Dock Door Width-** 8 (distance to stage is 20', flat push)

**Stage Door Height-** 10' **Stage Door Width-** 7'.7"

**Plaster Line To Audio Mix Position-** 66'

**Plaster Line To Booth-** 105'

**US Right Door To Dressing Rooms-** 18'

**(crossover available through the shop)**

Please be advised that a spiral staircase and piano case are an obstruction behind the cyclorama (upstage left). Storage and stage crosses can be made in the shop behind the stage. Access to the fly system, look rail and loading bridge all are located stage left.

### **Orchestra Pit**

The orchestra pit has three levels which can be adjusted for your show's needs. Stage-level so that your performers can use all of the apron, audience-level which is great for judges tables, or completely removed should you need to use it as a traditional orchestra pit. However, the pit cover is not hydraulic *so you will need to request adjustment or removal at your production meeting with the Technical Director two weeks prior to your event.*

### **Stage Floor**

Our stage floor is made of quarter inch Polyonyx over tongue and groove yellow pine. The floor is sprung. Renters that require Marley flooring need to bring their own or inform the Technical Director at least one month prior to the event so that arrangements can be made. Only the brooms provided by the venue and water may be used on the stage; please inform the technical director if you are using a snow machine.

## **House Seating Chart**



Two chorus and two star dressing rooms are available. Each provides lighted mirrors, sinks, and showers. Located off upstage right. Dimensions: **Star** 8' deep, 9'.8" wide, one bay

**Chorus** 12.6' deep, 26' wide, eight bay

**Soft goods/ Drapery**



Our house curtain can open from center or guillotine style and has a valence that is capable of hanging signs or banners for your event. There are 5 sets of legs on either side of the stage that have a height of 26' and a width of 8' along with 5 sets of black border that are 8' high and 54' wide. There is a black mid traveler that opens from center stage. The cyclorama (seamed) is 27' high by 54' wide and sits on lineset 30. Also available upon request is a black shark tooth scrim.

**Lineset Schedule**

Our single-purchase counterweight system located stage left has 32 linesets with a max arbor capacity of 1,500 lbs. Batten length is 55', excluding line sets 31 and 32, and a diameter of 1.5" (schedule 40) ID. Note, first electric cannot be utilized as a regular set. The fly rail is located stage left with 32 lines on 16' centers.

Line set #	Distance from Plaster	Description	Notes		
------------	-----------------------	-------------	-------	--	--

	0'-2.5"	Fire Curtain			
Line set 1	1'-2"	Valance			
Line set 2	2'-2"	Main Rag	Permanent	travel or guillotine	
Line set 3	3'-2"	Border			
Line set 4	3'-8"	Legs			
Line set 5	4'-8"	1st Elec			
Line set 6	5'-2"	choir mics	currently empty		
Line set 7	6'-8"	1A elec			
Line set 8	7'-8"	Border			
Line set 9	8'-8"	Movie screen			
Line set 10	9'-8"	Legs			
Line set 11	10'-8"	2nd elec			
Line set 12	11'-8"	Empty			
Line set 13	12'-2"	Empty	Typically used for rear projection screen		
Line set 14	13'-8"	Border			
Line set 15	14'-8"	Mid Black			
Line set 16	15'-8"	Legs			
Line set 17	16'-8"	3rd elec			
Line set 18	18'-2"	Empty			
Line set 19	19'-2"	Empty			
Line set 20	20'-8"	Border			
Line set 21	22'-2"	Legs			
Line set 22	23'-8"	4th elec			
Line set 23	25'-2"	Black Scrim			
Line set 24	26'-2"	border			
Line set 25	28'-2"	Legs			
Line set 26	29'-2"	cyc lights			
Line set 27	30'-8"	empty			
Line set 28	32'-2"	empty			
Line set 29	33'-2"	empty			

Line set 30	35'-2"	cyclorama			
Line set 31	36'-8"	empty	Moveable < very close to staircase >		
Line set 32	38'-2"	empty	Moveable < very close to staircase >		

## Lighting

**Systems:** 228 ETC/ LMI 2.4Kw dimmers, 9- 6Kw dimmers, (DMX protocol),

**Control:** ETC element

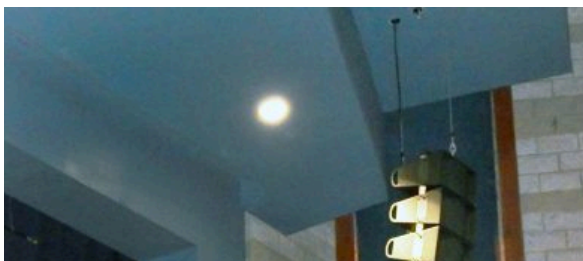
**Positions:** 2 front of house cove positions with 38 circuits/ cove, 2 front of house box boom positions (per side) with 8 circuits/ box. Onstage, the 1st electric is permanent on lineset 5 with 26 circuits, 18 drop boxes with 104 circuits overhead, 8 circuits upstage left and right, 4 circuits downstage left and right, 2 circuits in the pit, second cove to plaster: 66', first cove to plaster: 32' first box boom to plaster: 20' second box boom to plaster: 66'

Inputs are in the booth, designer station in lower center house, and down stage right. No dry lines available. Follow spots: 2- Canto 1200 (MSD) located second cove position. No moving lights or leds are available.

## Instrumentation:

Brand	Type	Beam	Quantity
ETC Source Four	Leko	10 degree	8
ETC Source Four	Leko	19 degree	24
ETC Source Four	Leko	26 degree	11
ETC Source Four	Leko	30 degree	11
ETC Source Four Par	Par	Various lens	40
Strand	Cyc Light	Three cell	6
Strand	fresnel	8 inch	30

## Sound



---

House PA is a flown L / R line array composed of 16 Fulcrum Acoustics FL283 cabinets (8 per side) and 4 RCF 8006AS active subwoofers (two per side). The array is dead hung.

Consoles:

Digico SD9, Behringer X32, Yamaha TF-1

Wireless:

8 Shure XLP (belt pack and hand held) E6, WL185 (limited) SE V7 on Shure HH  
4 Sennheiser G2 (belt pack and hand held) E6, 835

Complete mic list available upon request. House mix location is located in the last row of the center orchestra section. Distance to stage is 66' to plaster. Limited monitor capabilities.

**Power**

Available off stage right: (1)- 100 amp 3 phase 5 wire (DS), (2)- 400 amp 3 phase 5 wire (CS) and (US). One ETA PD 120 -40 amp 3 phase 5 wire with standard Edison outlets is available. There is also limited shore power available in the shop upon request.

Note: feeder / receptacle is not provided for shore power.

**Amenities**

Yamaha C7 piano (7')

Epson Pro L15005UH WUXGA 3LCD Laser Projector- 12,000 Lumens

**Loading/ Parking Information**



The Broyhill Civic Center is a closed property with ample parking for performers, crew and patrons. Loading dock can accommodate a 53' trailer with a tractor.

### Trusted Vendors and Partners

UNC Health-Caldwell

Caldwell Memorial Hospital

---

24 hour Emergency Medical Care  
321 Mulberry St SW  
Approximately 10 minute drive

1005 Blowing Rock Blvd  
Approximately 10 minute drive

Anderson Plus Urgent Care  
270 Pine Mountain Rd  
Hudson, NC 28638  
Approximately 6 minute drive

Truist Bank  
201 Mulberry St SW  
Approximately 9 minute drive

FastMed Urgent Care  
Wells Fargo Bank  
825 Blowing Rock Blvd  
Lenoir, NC 28645

Comfort Inn & Suites  
970 Blowing Rock Blvd  
Approximately 7 minute drive

## **Staff Contact**

Brooklyn Whorley- Box Office  
[bwhidden@cccti.edu](mailto:bwhidden@cccti.edu)  
828.726.2407

828.726.2414

Kimberly Edmisten- Executive Director  
[kedmisten@cccti.edu](mailto:kedmisten@cccti.edu)

Mrs. Davis Fennell-Director, Arts & Patron  
Experience

828.726.2318

[dfennell@cccti.edu](mailto:dfennell@cccti.edu)

828.726.2409

James Richards-Director, Technical  
Operations

[jrichards@cccti.edu](mailto:jrichards@cccti.edu)